

Vineyard Order Enrollee Help Guide

The North Coast Regional Water Board (North Coast Water Board) Vineyard Order (Order) requires farmers to address stormwater runoff from their vineyards to control sediment and pollutants that can reach streams. The Order also includes statewide requirements that protect drinking water through domestic well testing and fertilizer management. Refer to the following pages (1-4) of the Enrollee Help Guide for assistance in understanding Order requirements and compliance options.

Do I Need to Enroll in the Order?

Start Here

Do you own more over **five acres** of vineyards in the Russian River, Navarro River, or Gualala River Watersheds?*

AND

Are your vineyards farmed commercially (Do you sell your grapes)?

NO

You Are Exempted from Enrolling

Vineyards outside of the applicable watersheds and/or vineyards under 5 acres are required to comply with certain Order provisions, but are not required to enroll unless directed to do so by the North Coast Water Board. **See p. 46 of the Order for exemption criteria.**

YES

Do you want to Enroll in a Grower Coalition?

A grower enrolled in a Coalition remains responsible for complying with Order requirements, but shares the cost of compliance, monitoring and reporting with other Coalition members. This option also reduces grower interactions with the Regional Water Board and reduces State Board fees**.

NO

Enroll Individually by July 1, 2028

You must conduct required monitoring individually and report results directly to the Regional Water Board. **See Attachment A** of the Vineyard Order for monitoring and reporting requirements.

YES

Enroll in Coalition by July 1, 2028

The Coalition is required to start accepting enrollments by **July 1, 2027**. **See Attachment B** of the Vineyard Order or contact the Coalition for monitoring and reporting requirements.

Click HERE to Enroll

Visit the Vineyards webpage for enrollment information:
www.waterboards.ca.gov/northcoast/vineyards

*See Figure 1 on p. 98 of the Order for a map of the Big-Navarro-Garcia, Gualala-Salmon, and Russian River Hydrologic Unit Code (HUC) HUC-8 watersheds to determine your eligibility

**In addition to State Board fees, costs of complying in the Order may also include lab fees, cost of management practice implementation and grower Coalition fees. See p. 33 of the Order for cost of compliance information.

What Requirements Must I Implement?

Enrollees must implement management practices to reduce sediment and pollutants from leaving their vineyards and reaching surface water and groundwater. This includes prioritizing and repairing areas of erosion in the vineyard, minimizing nitrogen application, and routine maintenance of management practices. See **General Requirements on p. 50** of the Order.

I. **CHOOSE ONE** of Four Sediment and Erosion Control Compliance Options to Implement:

Certified Sediment and Erosion Control Plan*

See **p. 53** of the Order

No-Till Ground Cover

See **p. 55** of the Order

Sediment and Erosion Control Plan**

See **p. 52** of the Order

Minimum Ground Cover

See **p. 54** of the Order

CONDUCT THE FOLLOWING MONITORING:

Photo-Point Monitoring

See **p. 8** of Attachment A for Individual Enrollees and **p. 6** of Attachment B for Enrollees in a Coalition

Ag Drainage Structure Monitoring

See **p. 4** of Enrollee Help Guide, **p. 6** of Attachment A for Individual Enrollees and **p. 3** of Attachment B for Enrollees in a Coalition

II. **Establish and/or Maintain Streamside Areas**

Vineyards must meet Streamside Area buffer widths and requirements upon replant OR Enrollees may choose a Restoration Alternative. See **p. 56** of the Order for requirements and **p. 8** of Attachment D: Methodologies and Procedures for additional guidance

III. **Meet and/or Maintain Agricultural Road Standards**

Agricultural roads used for vineyard operations must meet certain standards within 10 years of enrollment in the Order. See **p. 55** of the Order for applicable requirements.

*Must be certified by a Qualified Professional.

A Voluntary Program may be used to develop plan. See **p. 5 of Attachment C: Third-Party Programs for more information.

What is my required Monitoring and Reporting?

Individual Enrollees are responsible for conducting all monitoring and reporting on their enrolled parcels and should refer to **Attachment A** for applicable requirements. Enrollees in a Coalition can utilize representative monitoring networks proposed and implemented by the Coalition for certain monitoring and reporting requirements. The Coalition may also collect and aggregate Enrollee reports for submission to the North Coast Water Board. Enrollees in a Coalition should refer to **Attachment B** for applicable requirements.

I. On-Farm Monitoring (Enrollee)

Monitoring completed by Enrollee on their vineyard(s). Enrollee must conduct monitoring in boxes A and B below to comply:

A. Drinking Water Well Sampling

See p. 11 of Attachment A and p. 7 of Attachment B

B. Management Practice Effectiveness Monitoring

Either Agricultural Drainage Structure Monitoring or Photo-Point Monitoring based on chosen Sediment and Erosion Control option. See p. 5 of Attachment A or p.3 of Attachment B

II. Representative Monitoring (Coalition)

Regional monitoring networks are proposed and implemented by Coalitions on behalf of their Enrollees. Individual Enrollees propose monitoring networks across their enrolled parcels. The required Representative Monitoring is in boxes A-C below:

A. Tributary Streambed Monitoring

p. 12 of Attachment B

B. Representative Pesticide Monitoring

p. 9 of Attachment A and p. 13 of Attachment B

C. Groundwater Trend Monitoring

p. 14 of Attachment A and p. 15 of Attachment B

III. Reporting

Coalitions report on behalf of their Enrollees. Individual Enrollees must report compliance information directly to the North Coast Water Board. The required reporting is in boxes A and B below:

A. Annual Compliance Report

Annual submission of management practice and monitoring information. See p. 16 of Attachment A and p. 20 of Attachment B

B. Trend Monitoring Report

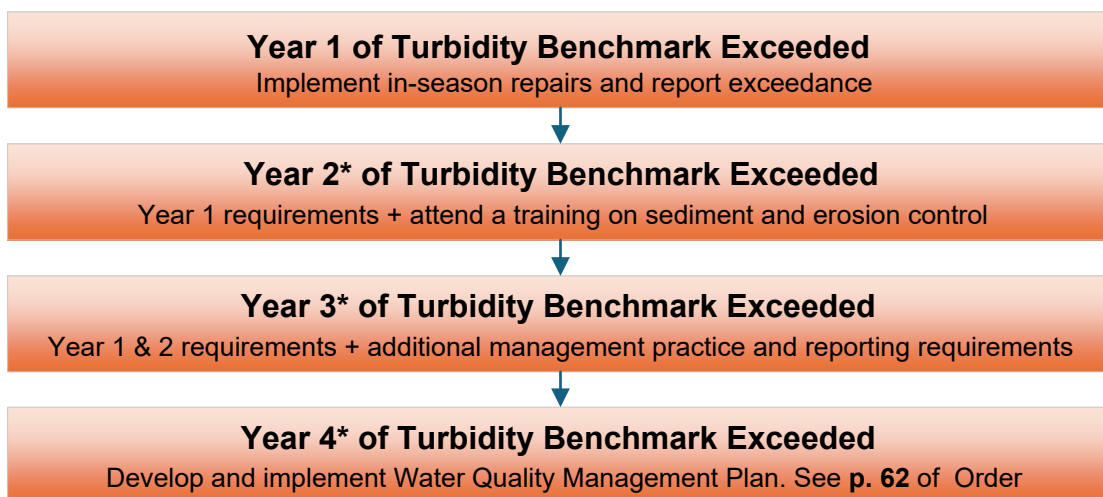
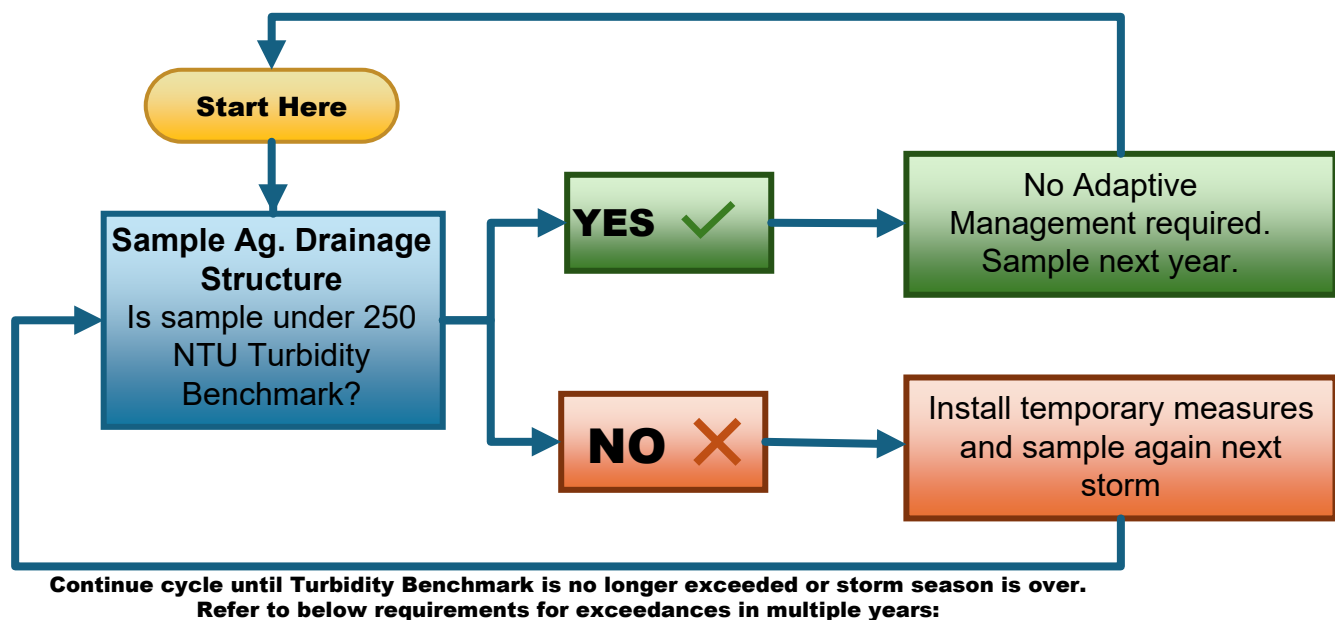
Five year report/analysis of all monitoring. p. 23 of Attachment A and p. 27 of Attachment B

How do I comply with Adaptive Management in the Order?

Pages 1-3 of the Enrollee Help Guide describe the baseline requirements of the Order and the monitoring required to verify that baseline requirements are sufficient to control pollutants from reaching surface or groundwater. Where existing practices are not sufficient, Adaptive Management may be required. The scenario below describes the Adaptive Management process.

Adaptive Management Scenario: Agricultural Drainage Structure Monitoring

Agricultural Drainage Structure Monitoring is described on **p. 6** of Attachment A for Individual Enrollees and **p. 3** of Attachment B for Enrollees in a Coalition



*Consecutive years of Turbidity Benchmark exceedances.

**There are additional scenarios that trigger Adaptive Management
See p. 62 in the Order for more information.**